

# PET-CT CASE OF THE MONTH

David W. Seldin, M.D. Franklin Square Hospital Center July 2008

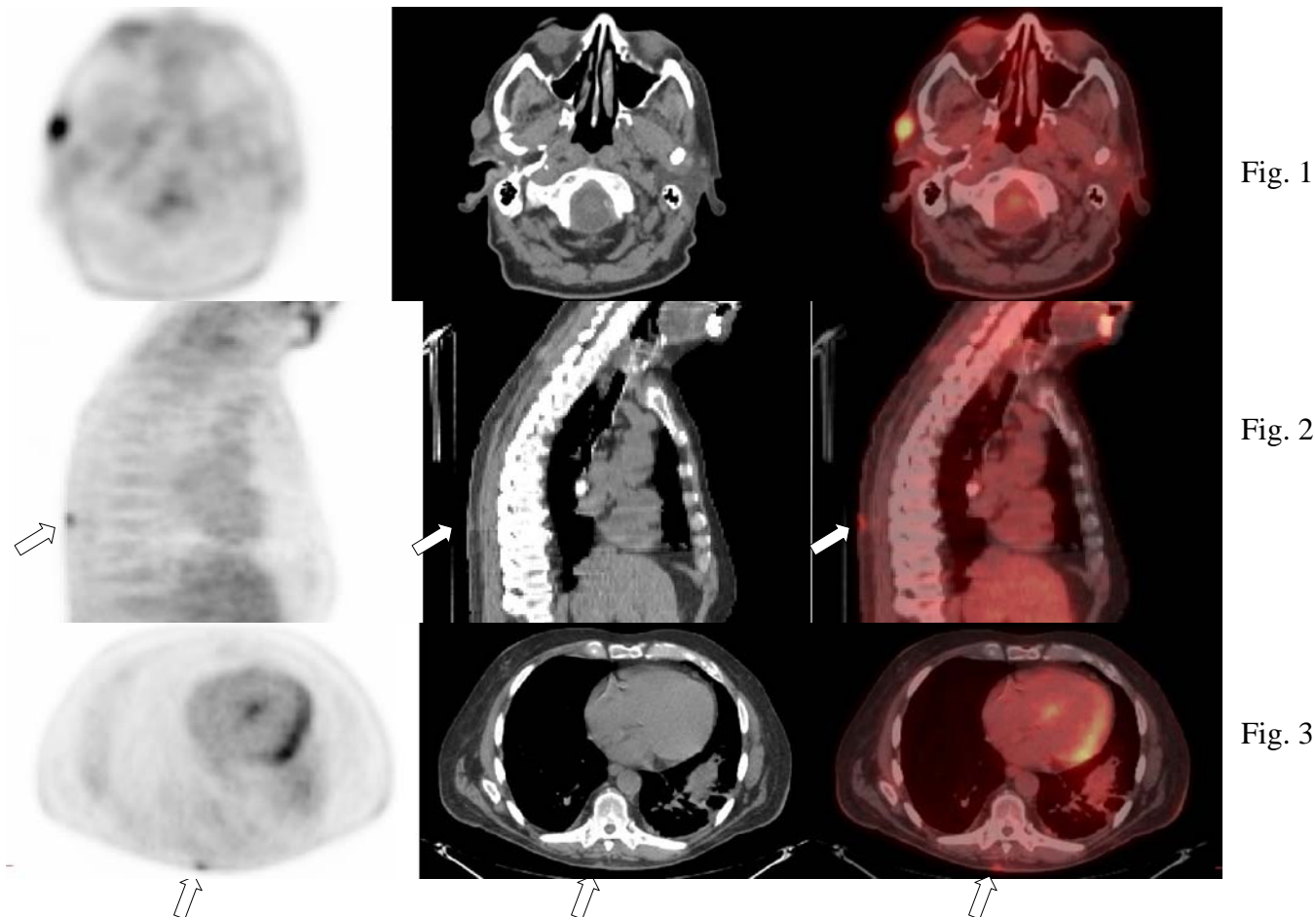


Fig. 1

Fig. 2

Fig. 3

This 81 year old man presented with a recurrence of a Merkel cell carcinoma of the right temple that had initially been resected one year previously. A preoperative PET-CT was ordered.

The PET-CT study showed tracer uptake in the recurrent right temple Merkel cell carcinoma (Fig. 1). An additional site of FDG uptake was seen in a 7 mm. subcutaneous nodule in the upper back to the right of midline (Figs. 2 and 3, arrows). At the time of surgery to resect the Merkel cell carcinoma, the nodule on the back was also resected and was found to be a basosquamous carcinoma.

## How did the PET-CT help? :

The lesion on the back, a basosquamous carcinoma, is a lesion with metastatic potential. Early detection and removal of this lesion avoided the potential for distant spread of disease.

Several recent articles have shown that unexpected malignancies (not including thyroid cancer) are found in approximately 1% of PET-CT studies<sup>1,2,3</sup>.

- (1) Cancer 2007;109:117-24
- (2) J Nucl Med 2005;46:752-57
- (3) J Nucl Med 2005;46:758-62

Advanced Radiology at Medical Arts PET/CT 410-918-3520  
Gabriel Soudry, M.D., Medical Director 443-777-7492

This case and previous ones can be seen at [www.petcases.com](http://www.petcases.com)