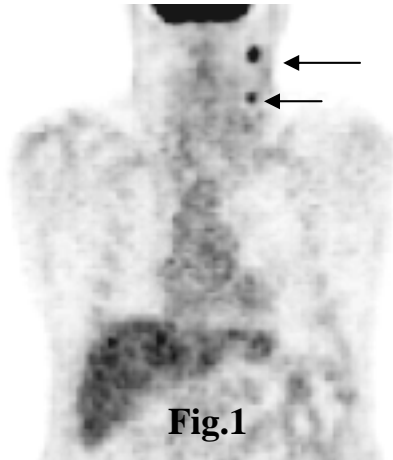


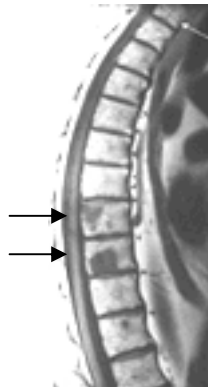
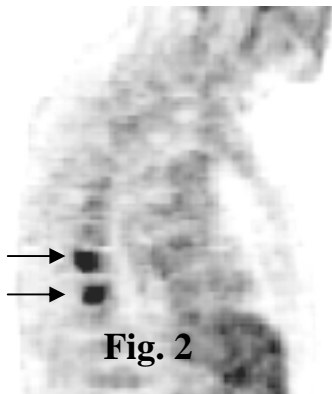
PET CASE OF THE MONTH

Gabriel Soudry, M.D. June 2002



This 69 year old man was status post surgical resection of a high grade infiltrating adenocarcinoma of the left **parotid** gland. Two out of 4 lymph nodes showed metastasis. The patient was asymptomatic without back pain or constitutional symptoms. A PET scan was obtained for restaging prior to radiation therapy and showed:

- Multiple positive nodes in the left cervical region (Fig. 1)
- Several spinal metastases (Fig. 2) confirmed by MRI (Fig. 3)
- A single liver metastasis in the caudate lobe (Fig. 4) confirmed by CT (Fig. 5)



Why did the PET help: The PET scan showed that the patient had much more extensive disease than previously thought (distant metastases), radiation therapy to the surgical bed was not a management option and palliative chemotherapy was more appropriate.

In a recent abstract (1) involving 54 patients with suspected recurrence of head and neck cancer, PET sensitivity and specificity in assessing recurrence were 97% and 90% respectively.

(1) J Nucl Med 2002;43(5)72P

