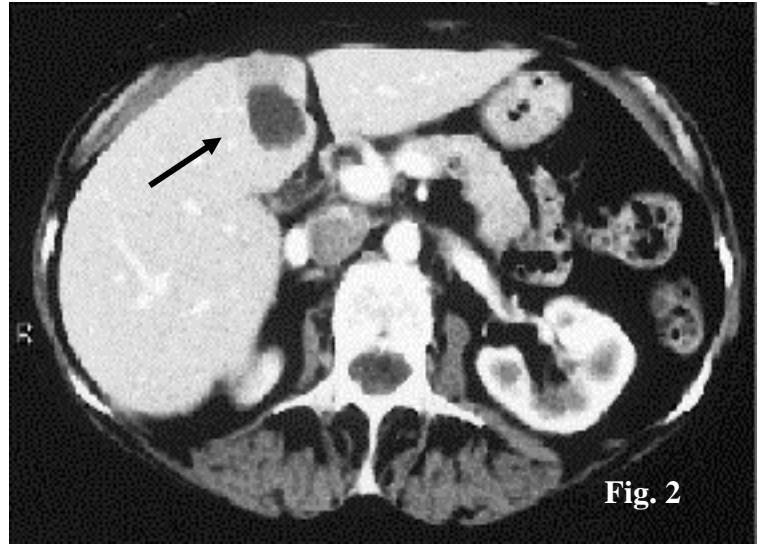
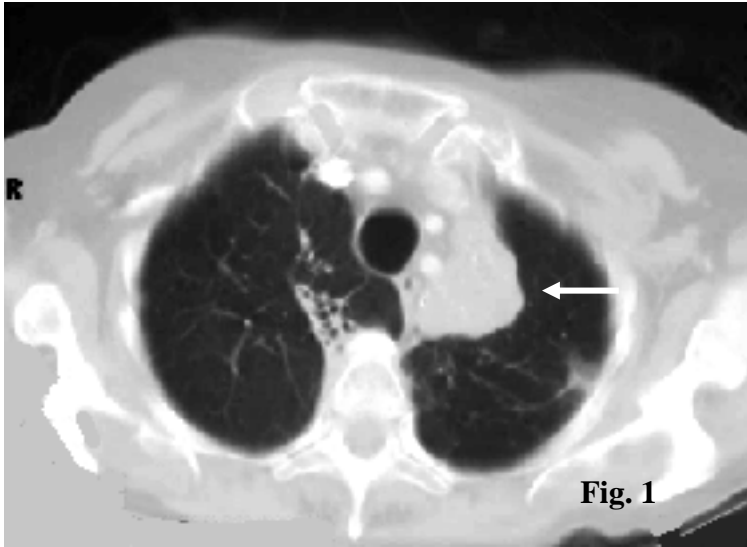


PET CASE OF THE MONTH

Gabriel Soudry, M.D. July 2002



This 77 year old patient with a remote history of tuberculosis was found to have a **left upper lobe density** on chest radiograph. The chest CT was reported as: “A soft tissue mass is seen in the pre-vascular space measuring 4.2 X 3.5 cm and is most worrisome for a neoplasm (Fig. 1). Cystic hepatic lesions are noted, however not meeting the requirements for simple cysts and metastatic foci cannot be excluded (Fig.2)”.

A PET scan was obtained which showed no evidence of malignancy in the chest, in the liver or in the rest of the body (Fig. 3).

Why did the PET help: On the basis of the PET scan results and taking in consideration the background of the patient, no further testing was performed and invasive procedures were avoided.

In a recent meta-analysis to evaluate the accuracy of PET for diagnosis of pulmonary nodules and mass lesions, 1474 pulmonary lesions were included. The sensitivity was reported at 96.8% associated with a high negative predictive value (1).

(1)JAMA 2001;285:914-924

MedStar PET Services 410-933-2290
Gabriel Soudry, M.D. 443-777-7492

This case and previous ones can be seen at
www.petcases.com